



# away at school

## Dorm Pillowcases

Designed by  
**Laura Stone  
Roberts**

Finished Size  
**19<sup>3</sup>/<sub>4</sub>" x 31"** each



### Planning

Both pillowcases were made with  
Tonga Batiks from Timeless Treasures.

### Fabric Requirements (for 2 pillowcases)

|  |                      |
|--|----------------------|
| Pink mottle (facing)                     | 1/2 yd.              |
| Assorted bold/bright batiks<br>(borders) | 3-4 fat<br>quarters* |
|  | <b>total</b>         |
| 2 assorted light batiks (cases)          | 7/8 yd. <b>each</b>  |

\*A fat quarter is an 18" x 20-22" cut of fabric or a true quarter of a yard.

## Cutting Instructions

Pink mottle

2 strips  $7\frac{1}{4}'' \times 40''$

Assorted bold/bright batiks

cut 2 sets of:

3 matching strips  $1\frac{1}{2}'' \times 18''$

cut a total of:

\*2 strips  $6'' \times 40''$ , pieced from

$1\frac{1}{2}$ - $4\frac{1}{2}'' \times 6''$  strips

2 assorted light batiks—cut from each:

1 rectangle  $25'' \times 40''$

\*See Step 1.

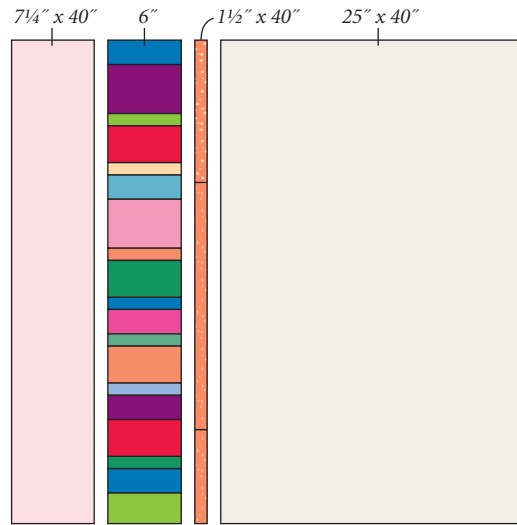


Diagram I-A

## Piecing the Pillowcases

- 1 Referring to **Diagram I-A**, sew bold  $1\frac{1}{2}$ - $4\frac{1}{2}'' \times 6''$  strips together to make two  $40''$  strips. Sew 3 matching bold  $1\frac{1}{2}'' \times 18''$  strips together end to end; trim to  $40''$ . Make 2 total. Stitch together pink  $7\frac{1}{4}''$  strip, bold  $6''$  pieced strip, bold  $1\frac{1}{2}''$  strip, and assorted light  $25'' \times 40''$  rectangle. Press in direction of arrows (**Diagram I-B**). Fold in half, right sides together, as shown by dashed line.
- 2 Using  $\frac{1}{4}''$  seam allowance, stitch layers together along 2 sides (**Diagram II**).
- 3 To hem open end (pink), fold  $\frac{1}{4}''$  to wrong side and press (**Diagram III**). Fold  $\frac{1}{4}''$  to wrong side again and press. Stitch along fold. Turn remaining width of pink to wrong side so pink strip covers pieced strip and encloses seam allowance between  $1\frac{1}{2}''$  strip and  $25'' \times 40''$  rectangle (**Diagram IV**); press and pin.
- 4 Turn pillowcase right side out. Topstitch along seam line between  $1\frac{1}{2}''$  strip and  $25'' \times 40''$  rectangle, catching hemmed edge of pink facing inside (**Diagram V**). Make 2 pillowcases total.

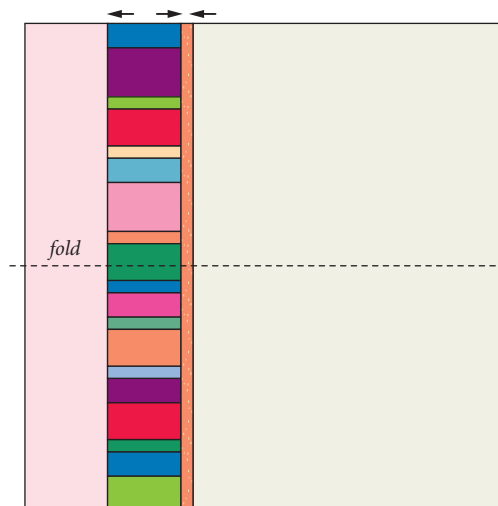


Diagram I-B

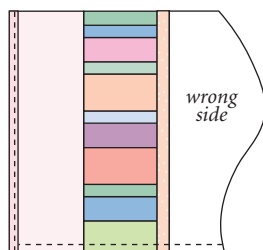


Diagram III

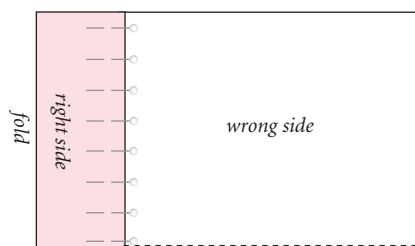


Diagram IV

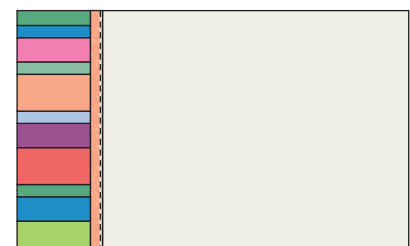


Diagram V

Make 2 total