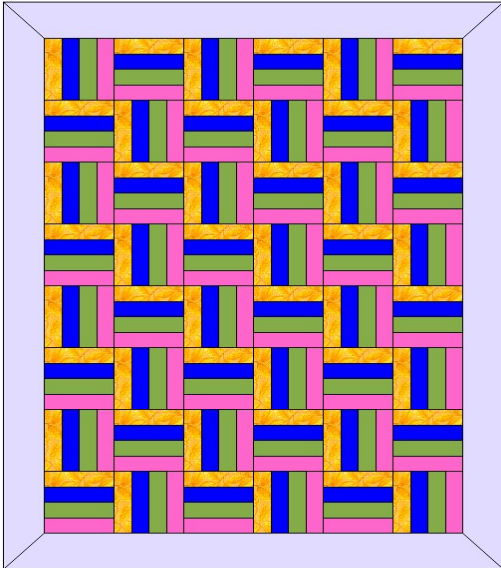


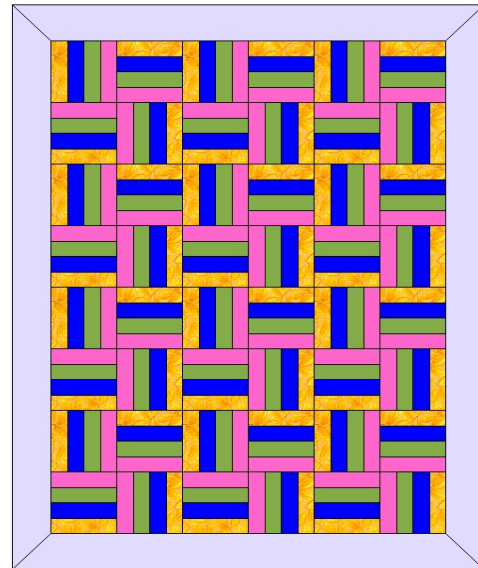


Rail Fence Quilt Pattern
With 2 Setting Options
Finished Size: 42" x 54"

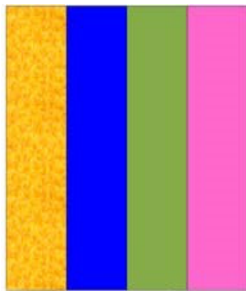
Standard Setting



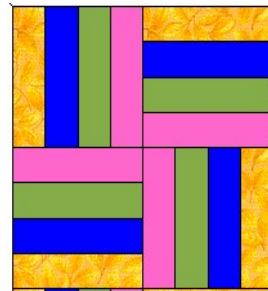
Pinwheel Setting



Strip Set



For the Pinwheel setting,
make 12 of these 4 block units



Fabric:

Blocks 1/2 yard each of 4 fabrics
Cut 8 strips from each of the four fabrics - cut 2" x WOF
Sew 8 strip sets, and then sub-cut into 48 blocks $6 \frac{1}{2}$ " x $6 \frac{1}{2}$ "
Arrange blocks using one of the setting options above

Border 1/2 yard
Cut 5 strips 3.5" x WOF

Backing 1 3/4 yards

Binding 1/3 yard